

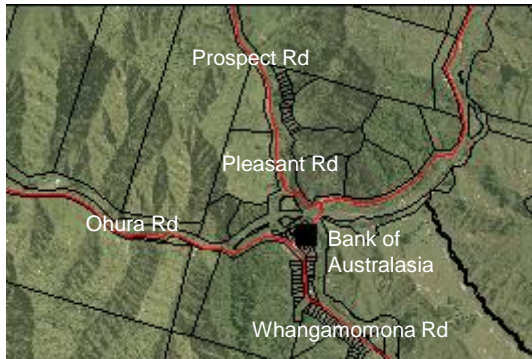


Bank of Australasia

Ohura Rd, Whangamomona

1911

Use:	Commercial	Historic Value:	3 out of 5
Materials:	Timber, iron roofing	Architectural Value:	2 out of 4
NZHPT Registered:	Not registered	Technical Value:	- out of 2
Legal Description:	-	Symbolic Value:	- out of 3
		Rarity Value:	- out of 2
		Townscape Value:	1 out of 2
		Group Value:	1 out of 2
		Overall Heritage Value:	8 out of 20

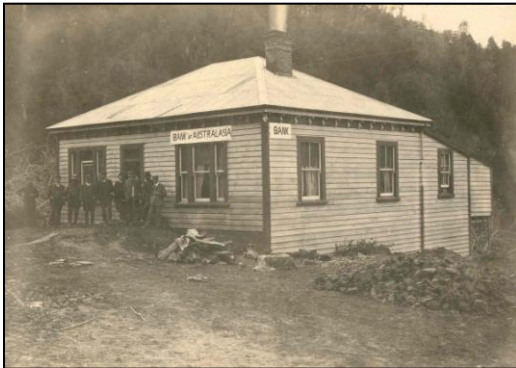


The Whangamomona branch of the Bank of Australasia was opened in 1911, after the building was tendered for. At this time, Whangamomona was a prosperous settler's community, with 30 buildings in the town. This included a hotel, baker, butcher, billiard rooms and a post office.

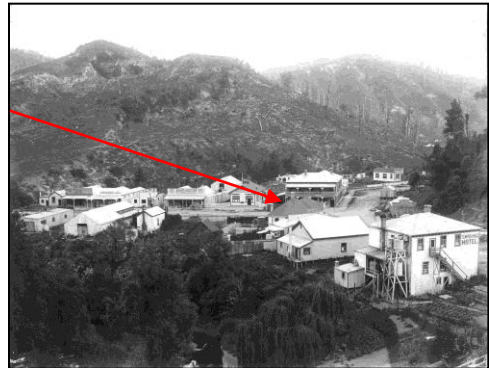
Mr. A. Fawkner became the first bank manager. He was a very community-minded man, and in 1914 he suggested, paid for, and planted the deciduous English trees on the main street in an attempt to make the town more attractive (these are still there today).

The township started to decline with the completion of the railway – no longer were jobs abundant, and families moved out. This was not helped by the great fire in 1943 which destroyed the bakehouse, drapery, butchery and billiard room. Businesses continued to close, with the Bank of Australasia closing just prior to WWII. Banking facilities were made available at the post office from then until 1988.

The building became the District Nurse's residence until the 1960s, when it was handed over to the Council workers for use as their quarters. After that, it was sold into private ownership. Lately, it had also been used as a café, and is one of the most-well kept historic buildings in Whangamomona.



Bank of Australasia, 1912



View of Whangamomona, 1920. The red arrow indicates the Bank of Australasia

Bibliography

History of Whangamomona County (1940)

Whangamomona 75th Jubilee

Whangamomona's History, Original by Whangamomona School Children (1977)

Church, Ian, *The Stratford Inheritance*, The Heritage Press (1990)