

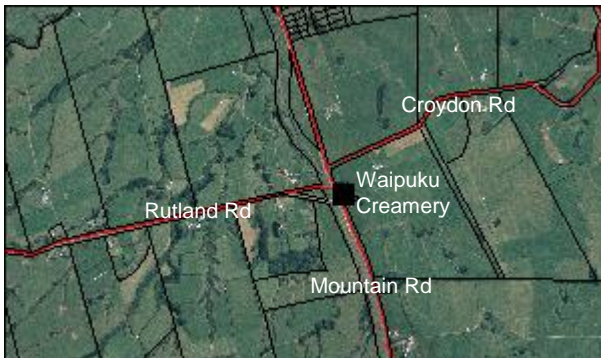


Waipuku Creamery

Mountain Rd, Waipuku

1892

Use:	None	Historic Value:	2 out of 5
Materials:	Concrete, cast iron	Architectural Value:	- out of 4
NZHPT Registered:	Not registered	Technical Value:	1 out of 2
Legal Description:	Pt Sec 16 DP 632 Pt Sec 16 DP 3664 Blk IX Huiroa SD	Symbolic Value:	- out of 3



Rarity Value:	- out of 2
Townscape Value:	1 out of 2
Group Value:	- out of 2
Overall Heritage Value:	4 out of 20

In 1877, Waipuku became the first township laid out by the Waste Land Board. It is a town basically forgotten now, but in its heyday it had a blacksmith, hotel, school, builder, cemetery and two general stores.

Even before the 1900s, the bush surrounding Waipuku was cut down, and a transition was made to farming. In 1892, a new mill was opened at Taraki, causing the school, hotel and most of the community of Waipuku to move to Taraki, which was less than 4km to the north.

In the same year, the Waipuku Creamery was built on the corner of Rutland and Mountain Roads, with Mr. A. Brown being appointed the first manager. (He later became the chairman of the Midhirst Co-op Company). The creamery was part of the private dairy factory that had just been built at Midhirst. Because of this creamery, a core community of about 30 farmers did not move, but based themselves around the creamery. With this new focus, in 1985 the post office moved to be closer to the creamery. When the farmers delivered their cans of milk, the children would collect the mail while the men socialised.



In about 1935 the company started drilling for a better water supply. However, they struck vegetable gas instead, which, when lit, burns for a long time. Unfortunately, there was not enough of it for it to be of any use, and so the hole was plugged up. Up to 1979, this gas was still present – being observed as steam coming out of the ground.

In the 1959 season, the tanker collection was made available to the suppliers, and so the need for the Waipuku Creamery was no longer present. In 1960, the Creamery closed, with the building and site being taken over by Doughty Tanks Ltd, becoming a concrete tank factory.

Bibliography

Waipuku: Once Upon A Town, David Bruce (May 2003)

Waipuku District

Stratford District Centenary: 1878-1978