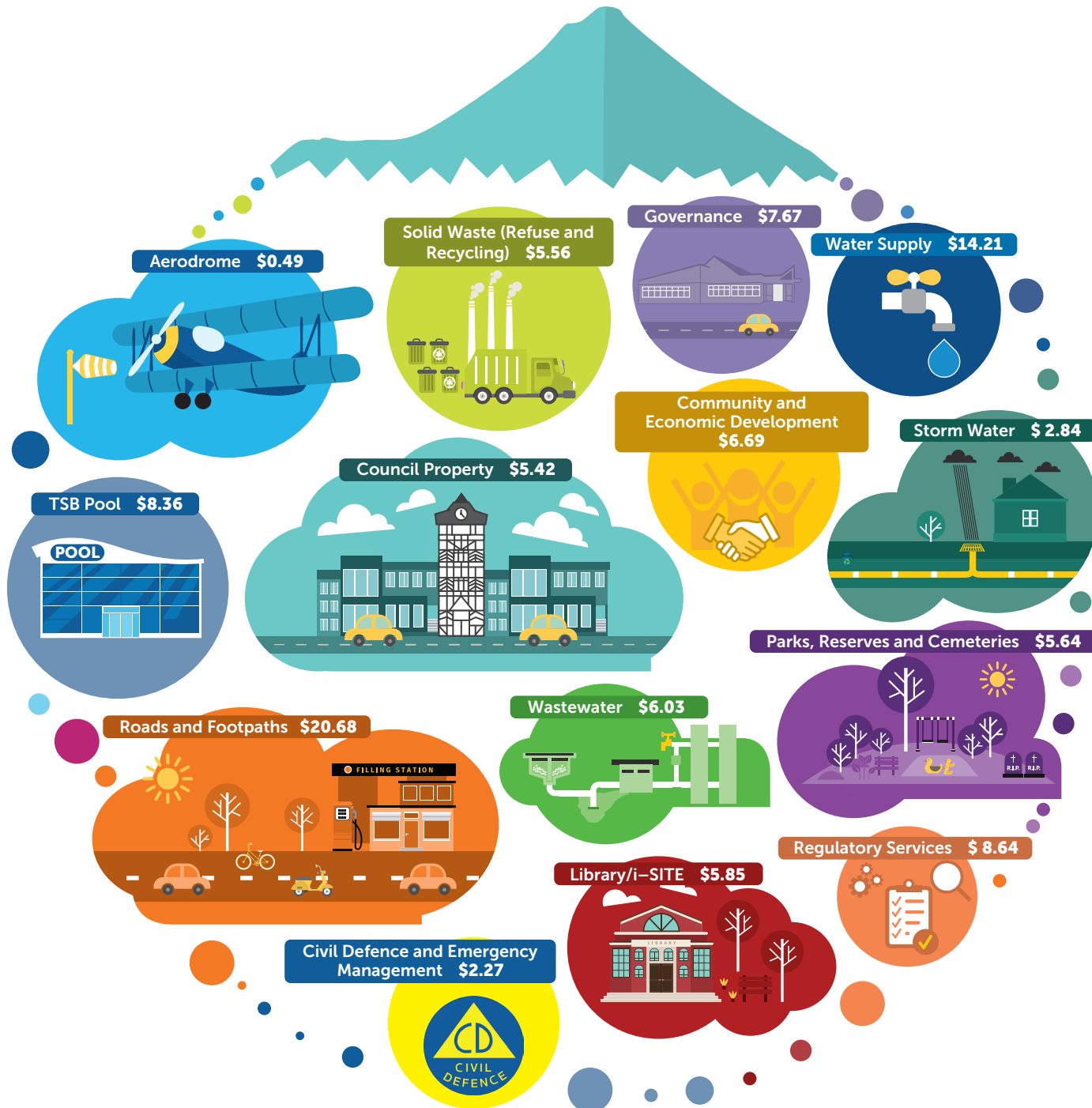


How Council spends each dollar

2022/23



How each \$100 of rates is spent

Aerodrome	\$0.49
Civil Defence and Emergency Management	\$2.27
Community and Economic Development	\$6.69
Council Property	\$5.42
Farm	(\$0.99)
Governance	\$7.67
Library/i-Site	\$5.85
Parks, Reserves and Cemeteries	\$5.64
Regulatory Services	\$8.64
Roads and Footpaths	\$20.68
Solid Waste (Refuse and Recycling)	\$6.20
Stormwater	\$2.84
TSB Pool Complex	\$8.36
Wastewater	\$6.03
Water Supply	\$14.21

\$100

Where each \$100 comes from

General Rates	\$10.88
Targeted Rates	\$17.50
UAGC	\$8.76
Reserves	\$15.62
NZTA Subsidies	\$12.69
Fees, charges and other revenue	\$7.77
Grants	\$8.63
Loans	\$18.15

\$100